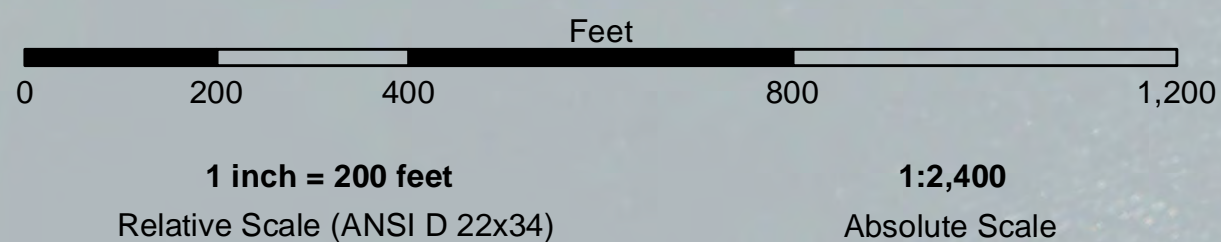


**PRELIMINARY ISSUE**  
THIS PLAN ISSUED FOR  
ADVANCE INFORMATION ONLY



Angle Point	Easting	Northing
01	5964034.06	2523317.15
02	5964016.64	2524016.94
03	5964112.28	2525555.38
04	5964100.94	2526002.91
05	5964261.44	2526320.08
06	5964510.68	2526417.97
07	5964640.82	2526387.82
08	5964896.75	2526428.90
09	5965340.91	2526683.00
10	5965486.85	2526813.90
11	5965566.98	2527049.75
12	5965533.54	2527090.90
13	5965656.54	2527207.90
14	5965741.54	2527102.90
15	5965817.15	2526809.28
16	5965658.54	2526720.90
17	5965589.54	2526594.90
18	5965354.54	2526471.90
19	5965075.79	2526287.40
20	5964548.87	2525702.48
21	5965208.23	2525530.41
22	5965004.97	2525845.23
23	5964811.88	2526142.53
24	5964530.87	2526207.95
25	5964430.39	2526163.01
26	5964302.32	2525949.44
27	5964312.18	2525550.74
28	5964336.54	2524024.90
29	5964353.96	2523325.11
C01	5964194.01	2523321.13
C02	5964176.59	2524020.92
C03	5964212.14	2525553.06
C04	5964201.63	2525976.17
C05	5964360.92	2526241.54
C06	5964520.76	2526312.91
C07	5964618.13	2526290.37
C08	5964854.32	2526285.71
C09	5964948.91	2526207.67
C10	5965351.62	2526300.45
C11	5964981.68	2526361.78
C12	5965473.68	2526652.44
C13	5965525.97	2526721.89
C14	5965541.25	2526811.61
C15	5965655.12	2527079.88
C16	5965590.20	2527144.80

Crescent City Entrance Light

FLOOD →  
← EBB

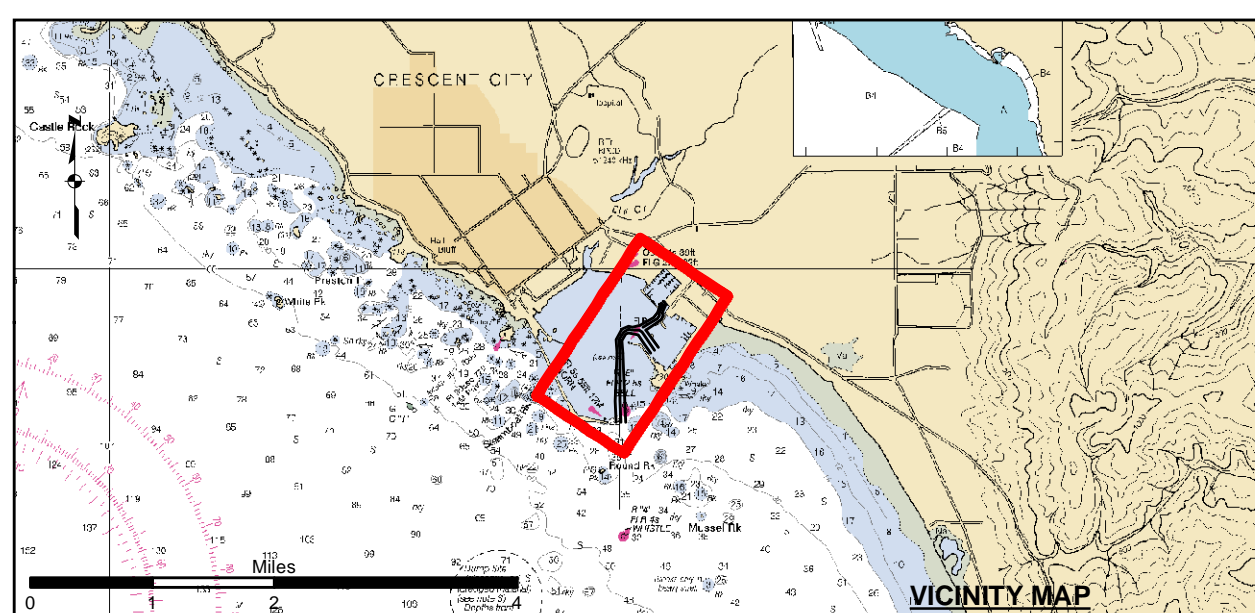
**US Army Corps of Engineers**  
San Francisco District  
1455 Market Street  
San Francisco, CA 94103

**DISCLAIMER:** The United States Government furnishes no warranty, expressed or implied, as to the accuracy, completeness, or reliability of the data hereon. The user is responsible for the results of any application of the data for other than its intended purpose. The data represents the results of data collected by the United States Government. Engineers activity and indicates the general existing conditions. As such, it is only valid for its intended use, content, time and accuracy specifications. The user is responsible for the results of any application of the data for other than its intended purpose. The data represents the results of data collected by the United States Government. Engineers activity and indicates the general existing conditions. As such, it is only valid for its intended use, content, time and accuracy specifications. The user is responsible for the results of any application of the data for other than its intended purpose.

Prepared Under the Direction of <b>JOHN D. CUNNINGHAM</b> LT COLONEL, C.E., DISTRICT ENGINEER	Chart Date: Feb 16, 2021
Subject: Hydro Survey Team Leader	Designed by: PDT
Recommendation: Chief, Hydro Survey Section	Flattened by: PDT
Approved: Chief, Construction Branch	Checked by: PDT
	Drawn by: PDT

CALIFORNIA  
DEL NORTE COUNTY  
**CRESCENT CITY**  
CONDITION SURVEY  
08 FEBRUARY 2021

**Sheet Reference Number**  
1 of 1



Federal Navigation Channel	Beacon, General	<b>Contours</b>
Shoaling Area	Obstruction Point	
Placement Area	Navigation Buoy	-15
Anchorage Area	Navigation Buoy	-14
Wreck Area	Shoalest Sounding*	-13
Submerged Wreck		-12
Angle Point		-11

**NOTES:**  
HORIZONTAL COORDINATE SYSTEM: NORTH AMERICAN DATUM OF 1983 (NAD83), PROJECTED TO THE STATE PLANE COORDINATE SYSTEM (SPCS), CALIFORNIA ZONE II. DISTANCE UNITS IN U.S. SURVEY FEET.  
VERTICAL DATUM: SOUNDINGS ARE SHOWN IN FEET AND INDICATE DEPTHS BELOW MEAN LOWER LOW WATER.  
THE INFORMATION DEPICTED ON THIS MAP REPRESENTS THE RESULTS OF A SURVEY CONDUCTED ON THE DATE INDICATED AND CAN ONLY BE CONSIDERED TO REPRESENT THE GENERAL CONDITION EXISTING AT THAT TIME.  
PLANE GRID, BEARING AND COORDINATES ARE BASED ON THE STATE OF CALIFORNIA COORDINATE SYSTEM, LAMBERT CONFORMAL PROJECTION, ZONE I NAD 83, CALIFORNIA, AS DESCRIBED IN SPECIAL PUBLICATION NO. 235, PUBLISHED BY NATIONAL OCEAN SURVEY, BASE MAPS ARE USDA NAIP 2010.  
DRAWING NOT TO BE USED FOR NAVIGATION. ONLY CHANNEL CONDITION AT DATE OF SURVEY. INFORMATION PROVIDED BY THE U.S. COAST GUARD. BUOY LOCATIONS REPRESENT THE POSITION OF THE SINKER ONLY.  
SURVEYED BY GAHAGAN & BRYANT ASSOCIATES, INC.

SOUNDINGS ARE ACQUIRED BY FATHOMETER AND ARE SHOWN TO THE NEAREST TENTH OF A FOOT. VERTICAL AND HORIZONTAL CONTROL: USC&GS DISK 'BM TIDAL 20 1959 RESET 1060', LOCATED NEAR THE NORTH EAST CORNER OF CITIZEN DOCK. ELEV. 13.46' MLLW. (1983-2001 EPOCH); N 2526793.45, E 5965753.79.  
HORIZONTAL POSITIONING OBTAINED USING LEICA 120 RTK SYSTEM.  
SOUNDINGS ARE BASED ON THE DATUM OF MEAN LOWER LOW WATER AT THE LOCALITY, NAVD 88.  
THE PROJECT BEATH IS 15 FEET.  
Survey Control:  
9419750, CRESCENT CITY  
Published 4/21/2003 | Epoch 1983-2001  
941 9750 TIDAL 20 RESET  
PID: LV0110  
OPUS November 2018  
PPCP  
941 9750 V TIDAL  
PID: LV0563  
OPUS October 2015